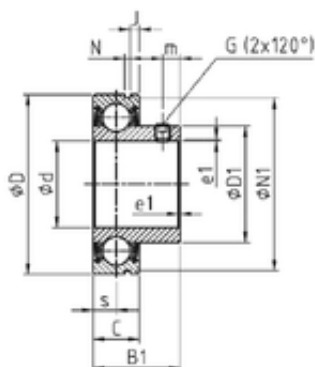




BEARING DRIVESHAFT ANDERSON, INC.



47,625 mm x 90 mm x 43.5 mm SNR
CUS210-30 Deep groove ball bearings

Bearing No. CUS210-30

Size	47.625x90x20 mm
Bore Diameter	47,625 mm
Outer Diameter	90 mm
Width	20 mm
d	47,625 mm
D	90 mm
B1	43,5 mm
C	20 mm
e	1,5 mm
a	3,96875 mm
m	9 mm
s	10 mm
D1	63,2 mm
J	3,7 mm
N	2,7 mm
N1	86,79 mm
Thread (G) - 5/16-24UNF	5/1624UNF
Weight	0,8 Kg
Basic dynamic load rating (C)	35,1 kN
b	2.7 mm
B	43.5 mm
G	5/16-24UNF
r	1.5
S	10 mm
SW	3.97 mm

CUS210-30 Bearing 2D drawings and 3D CAD models



BEARING DRIVESHAFT ANDERSON, INC.

C0	23.2 kN
T min.	-20 ° C
T max.	100 ° C
Recommended tightening torque for set screw	8 Nm