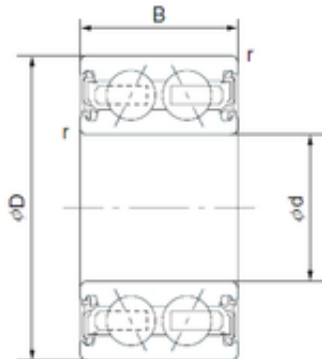




BEARING DRIVESHAFT ANDERSON, INC.



30 mm x 52 mm x 23 mm CYSD 4606-6AC2RS
Angular contact ball bearings

Bearing No. 4606-6AC2RS

Size	30x52x23 mm
Bore Diameter	30 mm
Outer Diameter	52 mm
Width	23 mm
d	30 mm
D	52 mm
B	23 mm
C	23 mm
Basic dynamic load rating (C)	17,5 kN

4606-6AC2RS Bearing 2D drawings and 3D CAD models